



**REGIONAL SPECIALISED METEOROLOGICAL CENTRE-TROPICAL CYCLONES, NEW DELHI  
TROPICAL WEATHER OUTLOOK**

**DEMS-RSMC TROPICAL CYCLONES NEW DELHI DATED 03.12.2024**

**TROPICAL WEATHER OUTLOOK FOR THE NORTH INDIAN OCEAN (THE BAY OF BENGAL AND THE ARABIAN SEA) VALID FOR THE NEXT 168 HOURS ISSUED AT 0600 UTC OF 03.12.2024 BASED ON 0300 UTC OF 03.12.2024.**

**BAY OF BENGAL:**

Yesterday's Well-Marked Low-Pressure Area over north Interior Tamil Nadu moved west-northwestwards, weaken temporarily into a Low-pressure Area over North Interior Tamil Nadu and south Interior Karnataka in the 1200 UTC of 2<sup>nd</sup> December and continue to move west north westward became a Well-Marked low again over Coastal Karnataka and adjoining east-central Arabian Sea at 0000 UTC of today, the 3<sup>rd</sup> December 2024. Thereafter it moved west-northwestward and lay over Coastal Karnataka and adjoining east central Arabian.

It is likely to move west-northwestwards over east-central Arabian sea during next 2 days.

Scattered low and medium clouds with embedded intense to very intense convection lay over central & southeast Bay of Bengal and south Andaman Sea (minimum CTT minus 70-85 Deg Cel). Scattered low and medium clouds with embedded moderate to intense convection lay over the north & southwest Bay of Bengal.

**\*PROBABILITY OF CYCLOGENESIS (FORMATION OF DEPRESSION) DURING NEXT 168 HRS:**

24 HOURS	24-48 HOURS	48-72 HOURS	72-96 HOURS	96-120 HOURS	120-144 HOURS	144-168 HOURS
NIL	NIL	NIL	NIL	NIL	NIL	NIL

**\*NOTE: EVERY 24HR FORECAST IS VALID UPTO 0300 UTC (0830 IST) OF NEXT DAY**

**ARABIAN SEA:**

Scattered low and medium clouds with embedded intense to very intense convection lay over the southeast and east-central Arabian Sea off Kerala-Karnataka Coast Lakshadweep Islands area (minimum CTT minus 70-90 Deg Cel). Scattered low and medium clouds with embedded isolated weak to moderate convection lay over the northwest & east-central Arabian Sea rest south Arabian Sea, Maldives & Comorin Area.

**\*PROBABILITY OF CYCLOGENESIS (FORMATION OF DEPRESSION) DURING NEXT 168 HRS:**

24 HOURS	24-48 HOURS	48-72 HOURS	72-96 HOURS	96-120 HOURS	120-144 HOURS	144-168 HOURS
NIL	NIL	NIL	NIL	NIL	NIL	NIL

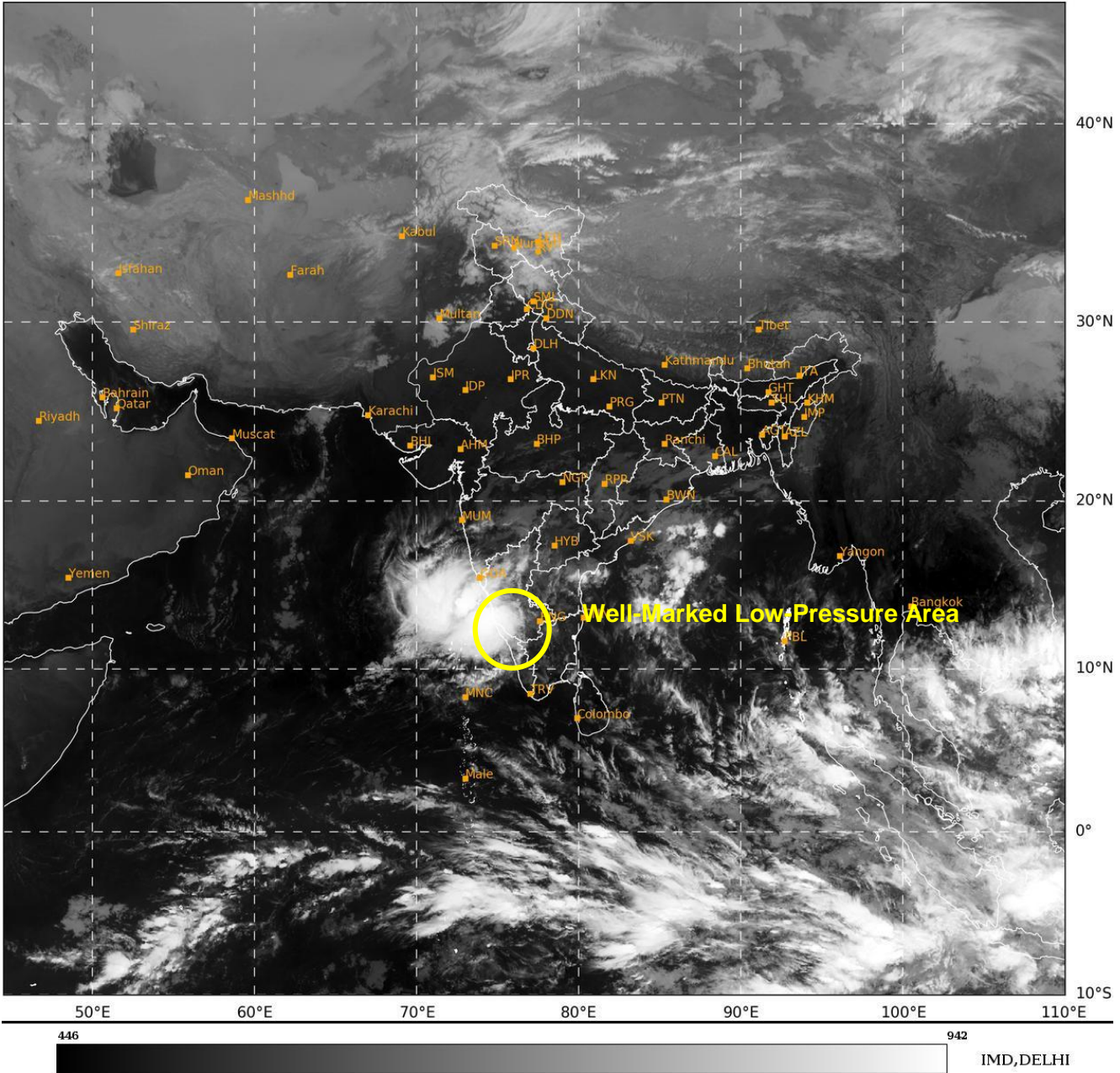
**\*NOTE: EVERY 24HR FORECAST IS VALID UPTO 0300 UTC (0830 IST) OF NEXT DAY**

Cloud distribution: (a) Isolated: <25%, Scattered:25-50%, Broken: 51-75%, Solid:>75%, Convection Intensity: (a) Weak: Cloud Top Temperature (CTT) >-25°C, (b) Moderate: CTT: - 25°C to -40°C, (c) Intense: CTT: - 41°C to -70°C and (d) Very Intense: : Less than -70°C  
PROBABILITY OF CYCLOGENESIS (FORMATION OF DEPRESSION):NIL: 0%, LOW: 1-33%, , MODERATE: 34-66% AND HIGH: 67-100%  
This is a guidance Bulletin for WMO/ESCAP Panel Member countries. Visit respective National websites for Country specific Bulletins

**REMARKS: NIL**

SAT : INSAT-3DR IMG  
IMG\_TIR1 10.8 um  
L1C Mercator

03-12-2024/(0345 to 0412) GMT  
03-12-2024/(0915 to 0942) IST



Cloud distribution: (a) Isolated: <25%, Scattered:25-50%, Broken: 51-75%, Solid:>75%, Convection Intensity: (a) Weak: Cloud Top Temperature (CTT) >-25°C, (b) Moderate: CTT: - 25°C to -40°C, (c) Intense: CTT: - 41°C to -70°C and (d) Very Intense: : Less than -70°C  
PROBABILITY OF CYCLOGENESIS (FORMATION OF DEPRESSION):NIL: 0%, LOW: 1-33%, , MODERATE: 34-66% AND HIGH: 67-100%  
This is a guidance Bulletin for WMO/ESCAP Panel Member countries. Visit respective National websites for Country specific Bulletins